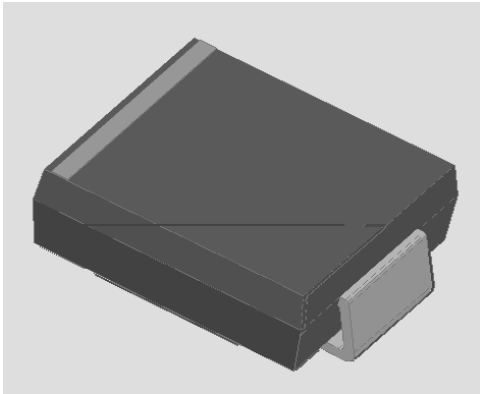


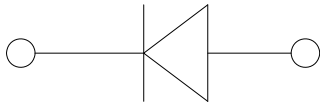
Surface Mount Schottky Rectifier



Features

- Guardring for overvoltage protection
- Low power losses
- Extremely fast switching
- High forward surge capability
- High frequency operation
- Meets MSL level 1, per J-STD-020, LF maximum peak
- : Tin plated leads, solderable per J-STD-002 and JESD22-B102

f



(Fig " 1)	I_o	A	5 " 0
Surge(non-repetiti je)for k ard current 4 * 0H n half-sine ka je ž 1 cydl ež T	I_{FSM}	A	120
Voltage rate of change (rated V_R)	dV/dt	V/ μ s	10000 T
Storage temperature	T_{stg}		
	J		-55 ~+175

Electrical Characteristics $T_a=25$ Unless otherwise specified

PARAMETER	SYMBOL	TEST CONDITIONS	TYP	MAX	UNIT	
Instantaneous forward voltage	V_F	$I_F=5A$	$T_J=25$	0.82	0.9	V
			$T_J=125$	0.7	0.8	
Reverse current	I_R	Rated V_R	$T_J=25$	-	1	μ A
			$T_J=125$	-	150	
Typical junction capacitance	C_J	$V_R=4V, f=1MHz$	100	-	pF	



SS515Q THRU SS520Q

Thermal Characteristics $T_a=25$ Unless otherwise specified

PARAMETER	SYMBOL	UNIT	SS515Q	SS520Q
Thermal resistance	$R_{J-A}(1)$	/W	47 ⁽¹⁾	
	$R_{J-L}(1)$		13 ⁽¹⁾	

Note(1)

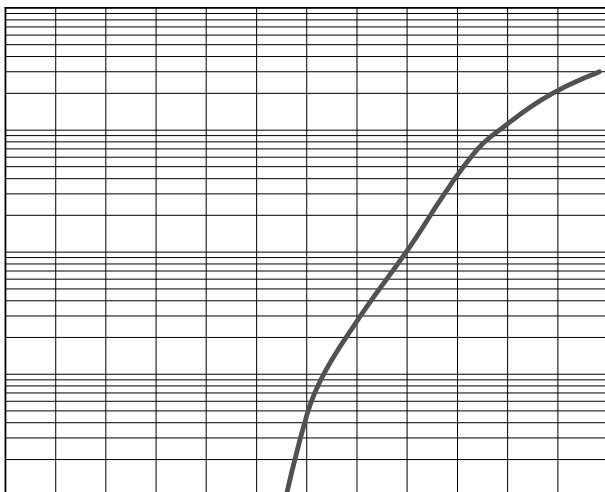
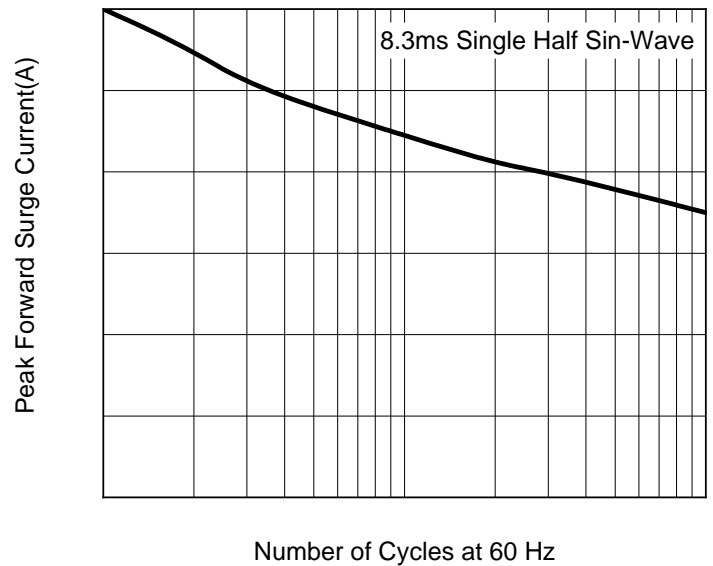
Thermal resistance from junction to ambient and from junction to lead mounted on P.C.B. with 0.6" x 0.6" (16 mm x 16 mm) copper pad areas

Ordering Information (Example)

PREFERED P/N	PACKAGE CODE	UNIT WEIGHT(g)	MINIMUM PACKAGE(pcs)	OUTER CARTON QUANTITY(pcs)	DELIVERY MODE
SS515Q~SS520Q	F1	Approximate 0.251	3000	42000	13" reel

Characteristics (Typical)

Fig.2:Maximum Non-Repetitive Peak Forward Surge Current





SS515Q THRU SS520Q

Outline Dimensions

DO-214AB (SMC)		
Dim	Min	Max
A	6.60	7.11
B	2.85	3.27
C	5.59	6.22
D	7.75	8.13
E	1.99	2.61
F	0.15	0.31
G	0.76	1.52
H	0.05	0.20

Suggested pad layout

Dim	Typ
P1	9.9
P2	3.84
Q1	3.03
Q2	3.82



SS515Q THRU SS520Q

Disclaimer

The information presented in this document is for reference only. Yangzhou Yangjie Electronic Technology Co., Ltd. reserves the right to make changes without notice for the specification of the products displayed herein to improve reliability, function or design or otherwise.

The product listed herein is designed to be used with automotive electronics, are not designed for use in medical, lifesaving, lifesustaining, or military, Yangjie or anyone on its behalf, assumes no responsibility or liability for any damages resulting from such improper use of sale.

This publication supersedes & replaces all information previously supplied. For additional information, please visit our website [http:// www.21yangjie.com](http://www.21yangjie.com) , or consult your nearest Yangjie's sales office for further assistance.